

WIMBERLEY PARKS AND RECREATION



ANNUAL REPORT FISCAL YEAR 2024



2024

WIMBERLEYPARKSANDREC.COM

TABLE OF CONTENTS

WHO WE ARE	2
DEPARTMENT HIGHLIGHTS	3
PARKS AND REC BY THE NUMBERS	4
PARKS AND RECREATION ADVISORY BOARD	5
WIMBERLEY PARKS & REC MASTER PLAN	6
MAINTENANCE & OPS	7
PROGRAMS & EVENTS	8 - 9
COMMUNITY CENTER	10
FINANCIAL REPORT	11-12

WHO WE ARE

MISSION



"To enhance the quality of life of current and future citizens of Wimberley by protecting our natural resources, providing safe spaces for recreation, and encouraging environmental education through our parks, trails, and open spaces while fostering a creative community through our programs and events"

Parks and Recreation Leadership

Richard Shaver, Director

Bryce Burkhalter, Natural Resource and Maintenance Manager

Rachel Littleton, Recreation Manager

Erica Flocke, Operations Manager

Samantha Engemoen, Community Center Manager

7

FULL TIME STAFF

32

PART TIME STAFF

120

VOLUNTEERS



We are proud of our Hill Country lifestyle and atmosphere and hope that you will enjoy it as well. Wimberley's parks, trails, and community programs showcase the natural beauty and true sense of place that encompass the town.



FY 2023-2024 HIGHLIGHTS

- Wimberley Parks and Recreation Comprehensive Master Plan completed
- Dark Sky Place of the Year - 2023
- Trip Advisor Travelers Choice - 2023
- Parkland Dedication Ordinance passed
- Highest program attendance
- Highest Blue Hole swim season attendance
- Over \$410,000 collected in grants, sponsorships, and donations

PARKS AND REC BY THE NUMBERS

7

Wimberley Parks

150

Acres of Parkland

66,000+

Blue Hole Swim Season Attendees

10,000+

Program Attendance

80+

Program Partners

240

Volunteer Hours

650

Weddings and Private Events



WIMBERLEY PARKS AND RECREATION ADVISORY BOARD

Board Members

Leah Cuddeback, Chair

Lori Olsen, Vice-Chair

Anthony Derringer, Secretary

Amy Crowell

Lee Ann Linam

Lin Weber

Rachel Buchanan

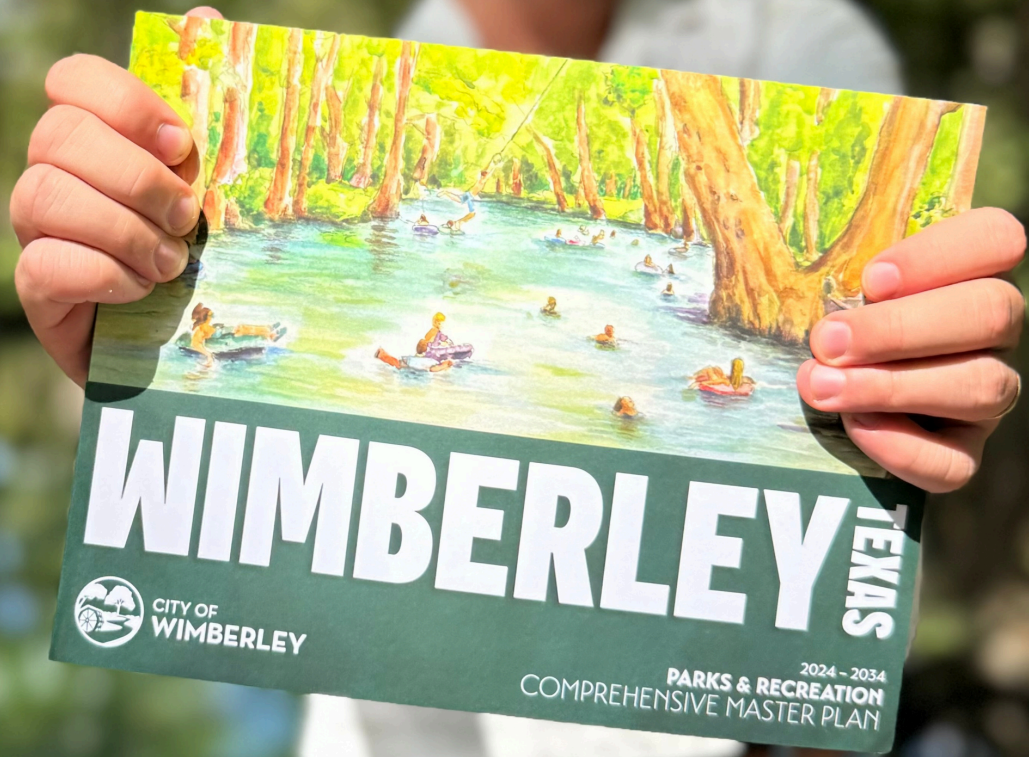
Purpose

The purpose of this section is to provide for the orderly and safe development of parks and recreational facilities for the community. This section is adopted so that the parks and recreation board may advise the city council to promote public health, safety, morals, general welfare, and protect the public interest and preserve the safety of residents.

Duties

The board shall develop a master parks plan for consideration by the city council. The board shall also recommend amendments to the plan as needed. It shall make recommendations to the city council concerning procurement opportunities, procurement, and development of parks and other recreational facilities in the city, as well as facilities planning, construction, and park development and maintenance.





SHAPING THE FUTURE OF WIMBERLEY PARKS & REC

THE WIMBERLEY PARKS AND RECREATION DEPARTMENT COMPLETED THE 2024-2034 COMPREHENSIVE MASTER PLAN

What is a Master Plan?

A master plan is a strategic document that outlines a vision and roadmap for the future development and enhancement of recreational facilities, open spaces, and community opportunities over a designated period, typically spanning 10-15 years. It serves as a guiding framework for decision-making and prioritization, ensuring that community needs and aspirations are met effectively and sustainably.

What does the Master Plan include?

The Parks and Recreation Master Plan encompasses a comprehensive planning process designed to provide clear guidance and policy direction to local government leaders.

How will it be used?

The Parks, Recreation, and Open Space Master Plan will serve as a foundational tool for building community consensus, guiding investments, decision-making, and enhancing quality of life.

Ultimately, the plan aims to create a vibrant, responsive, and sustainable park system that offers excellent recreational opportunities and well-maintained facilities for all community members.

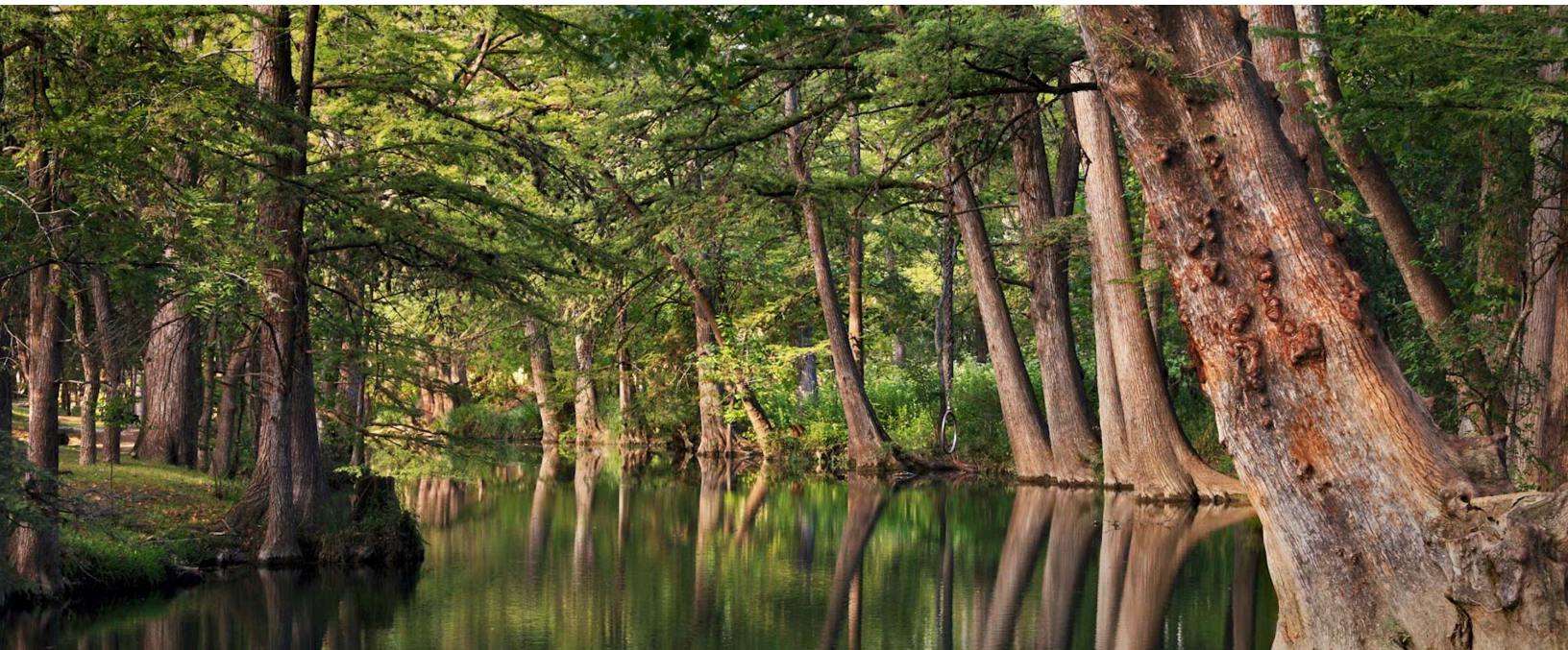
Visit our website wimberleyparksandrec.com to view the plan and see how your City is working to achieve these goals.



WIMBERLEY
PARKS AND RECREATION

PARK MAINTENANCE & OPERATIONS

- **Shade Structure** was installed at Oak Park - Added an 8' tall 20'x20' shade structure in the seating area next to Oak Park Welcome Center.
- Hike and Bike **Trail Improvement Project** completed - \$360,000 project which updated the trail at Blue Hole Regional Park to ADA standards and fixed all washout areas, which will assist with lowering maintenance costs and benefit the environment surrounding the trail.
- **ADA ramp** built to parks department main office entrance.
- Built a **parking structure** for parks department vehicles and UTVs.
- Designed and installed new and updated **rule signs** at all BH facilities.
- Installed a new **AED unit** to assist with soccer safety policies.
- Added a **vending machine** providing healthy snacks and beverages at Blue Hole and the Community Center.
- Repaired and expanded **rainwater irrigation** at the Parks Department office.



RECREATION PROGRAMS & EVENTS

- **2,000+** more program attendees than last year
- New programs and special events included:
 - **Camp No Kids** - A day of summer camp activities for adults
 - **Sustainability Workshop** - 6-week workshop series dedicated to teaching Wimberley residents about water conservation, up-cycling, and re-use
 - **Adult Sport Leagues**
 - Sand Volleyball
 - Cornhole
 - Dodgeball
 - Softball
 - Brand new **Wimberley Summer Camp** at the Community Center
 - Easter **Egg Hunt**, 5K & 1K
 - Wimberley **Valentine's Gala** at the Community Center



PARK PROGRAMS



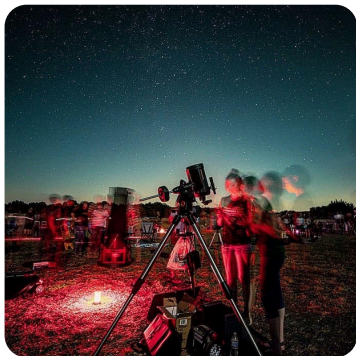
Boo! Hole Halloween



Howl at the Moon Dance



Polar Bear Plunge



Star Party



Concerts in the Park



Blue Hole Nature Camp



Wimberley Summer Camp



Migratory Bird Seminar



ZUMBA! Classes



Nature Education



Adult Sport Leagues



Arts and Rec Programs

WIMBERLEY COMMUNITY CENTER

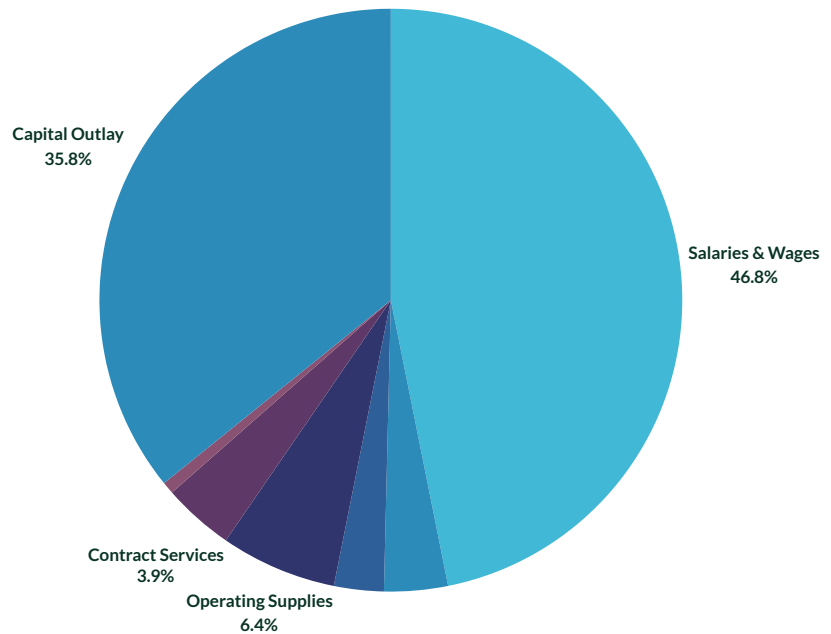
- More than **doubled revenue** from last FY - \$35,000 to \$80,000
- **Supported organizations** such as Wimberley Chamber of Commerce, Wimberley Valley Arts League, WISD, Wimberley Senior Center, Civic Club, Lions Club
- Provide **health and wellness programs** to hundreds of participants
 - Zumba
 - Yoga
 - Qi Gong
- **Technology updates** include:
 - New sound system
 - Bluetooth microphones
 - New projector and screen
 - Digital advertisement board in the lobby
- Installed an automatic **ADA door opener**



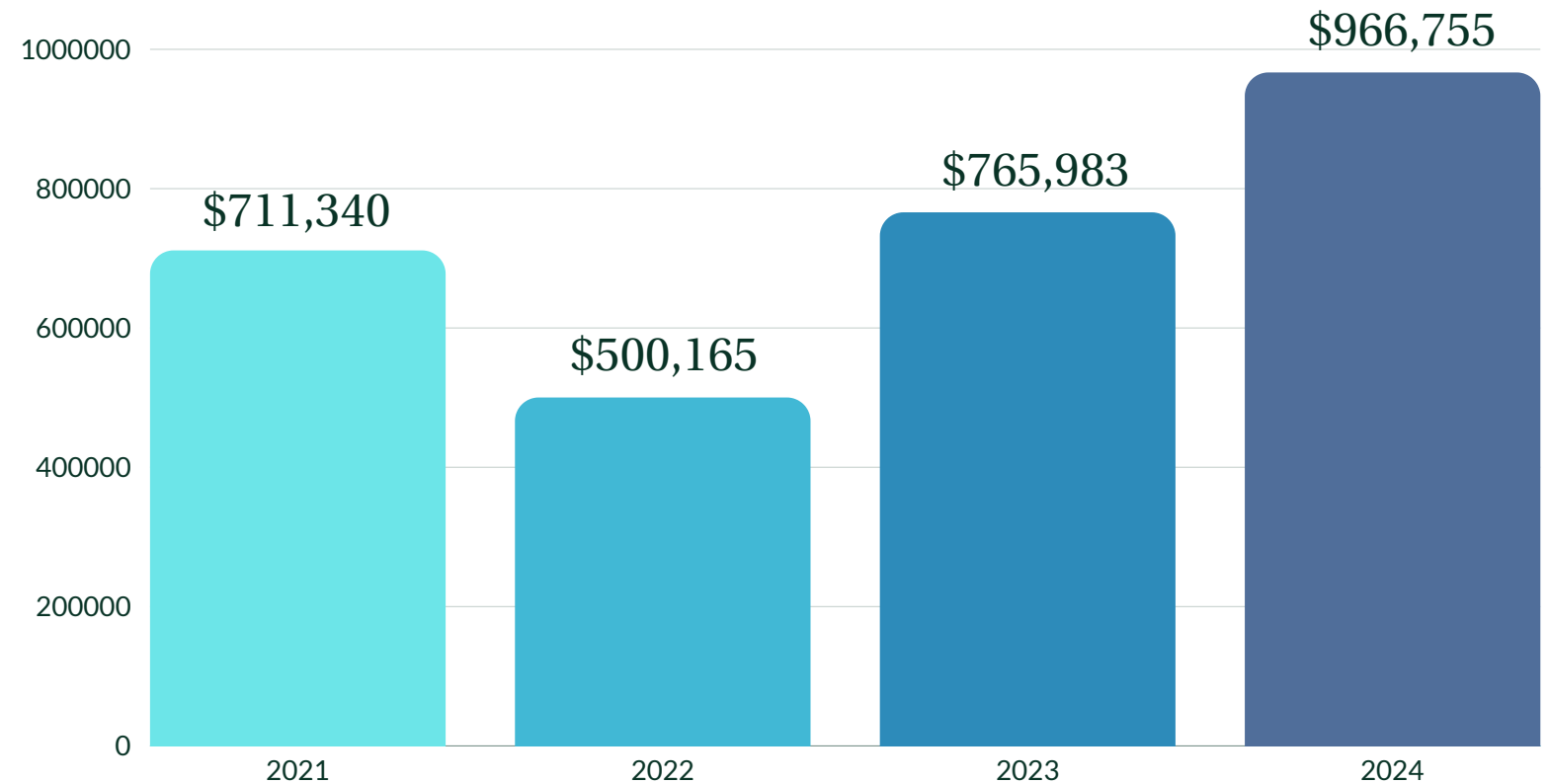
FINANCIAL REPORT

WIMBERLEY PARD EXPENDITURE BY CATEGORY

Salaries & Wages	\$578,275
Capital Outlay	\$441,897
Operating Supplies	\$79,527
Contract Services	\$48,742
Maintenance/ Utilities	\$43,582
Programs & Events	\$34,041
Training/ Conference	\$8,291
Total	\$1,234,364



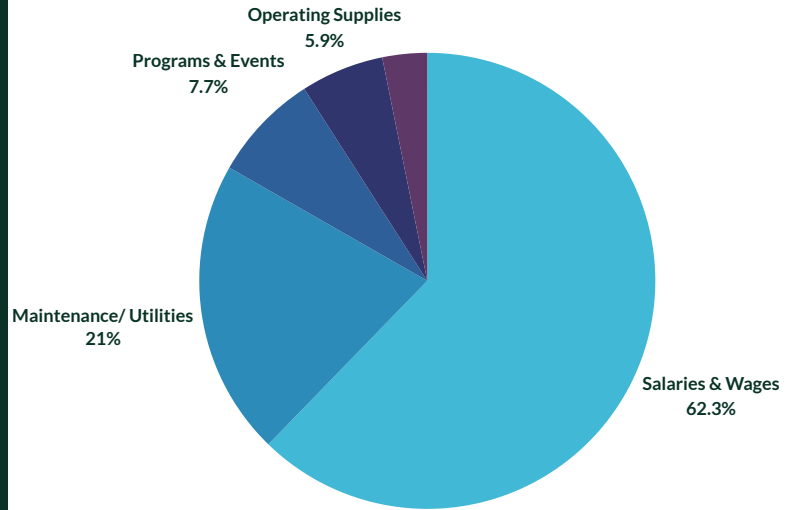
WIMBERLEY PARD REVENUE BY YEAR



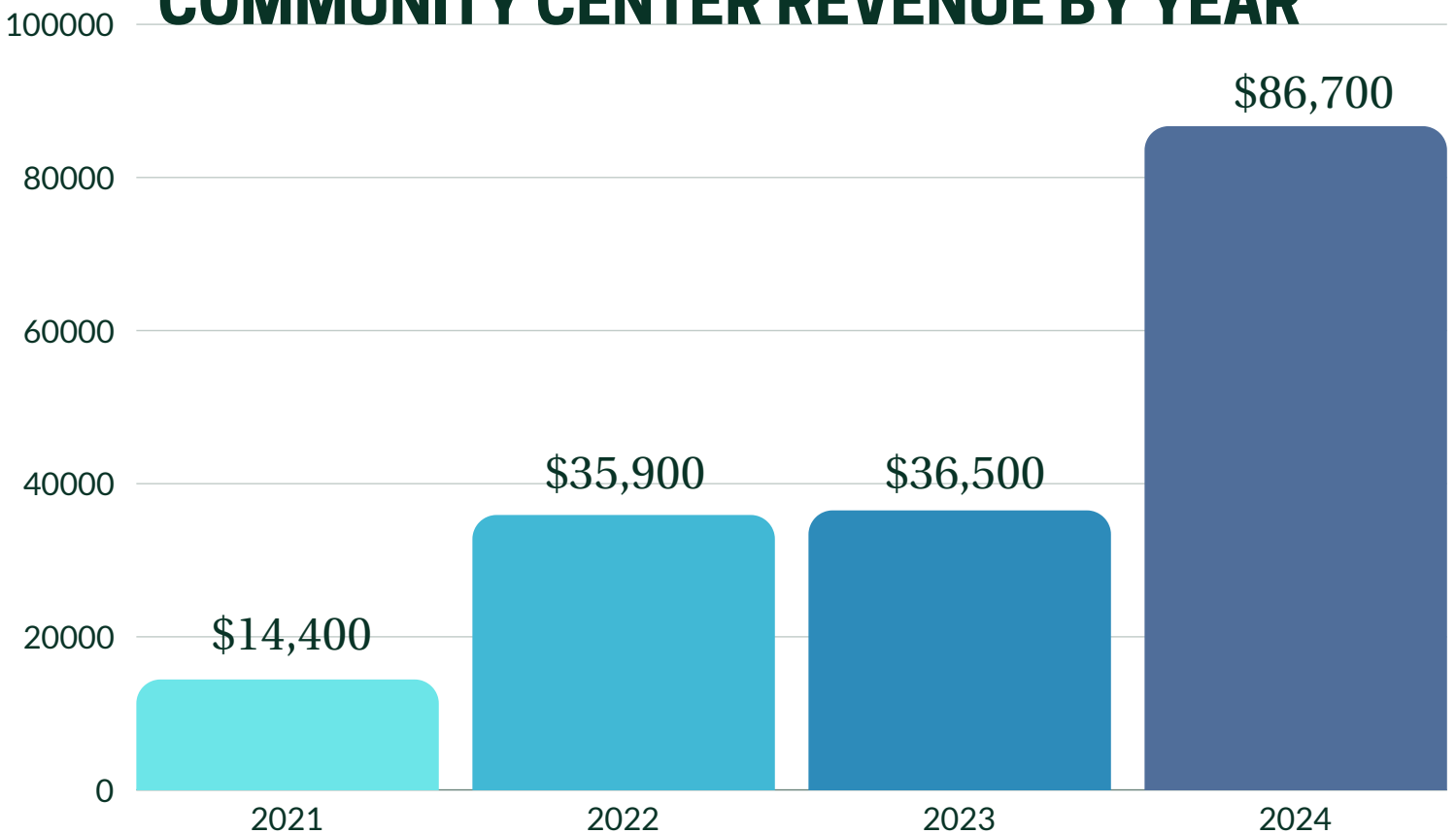
FINANCIAL REPORT

COMMUNITY CENTER EXPENDITURE BY CATEGORY

Salaries & Wages	\$116,319
Maintenance/ Utilities	\$39,211
Programs & Events	\$14,312
Operating Supplies	\$11,022
Contract Services	\$5,921
Capital Outlay	\$10,896
Total	\$197,040



COMMUNITY CENTER REVENUE BY YEAR



The City of Wimberley Parks
and Recreation Department

wimberleyparksandrec.com

333 Blue Hole Ln.
Wimberley, TX 78676

(512) 660-9111

