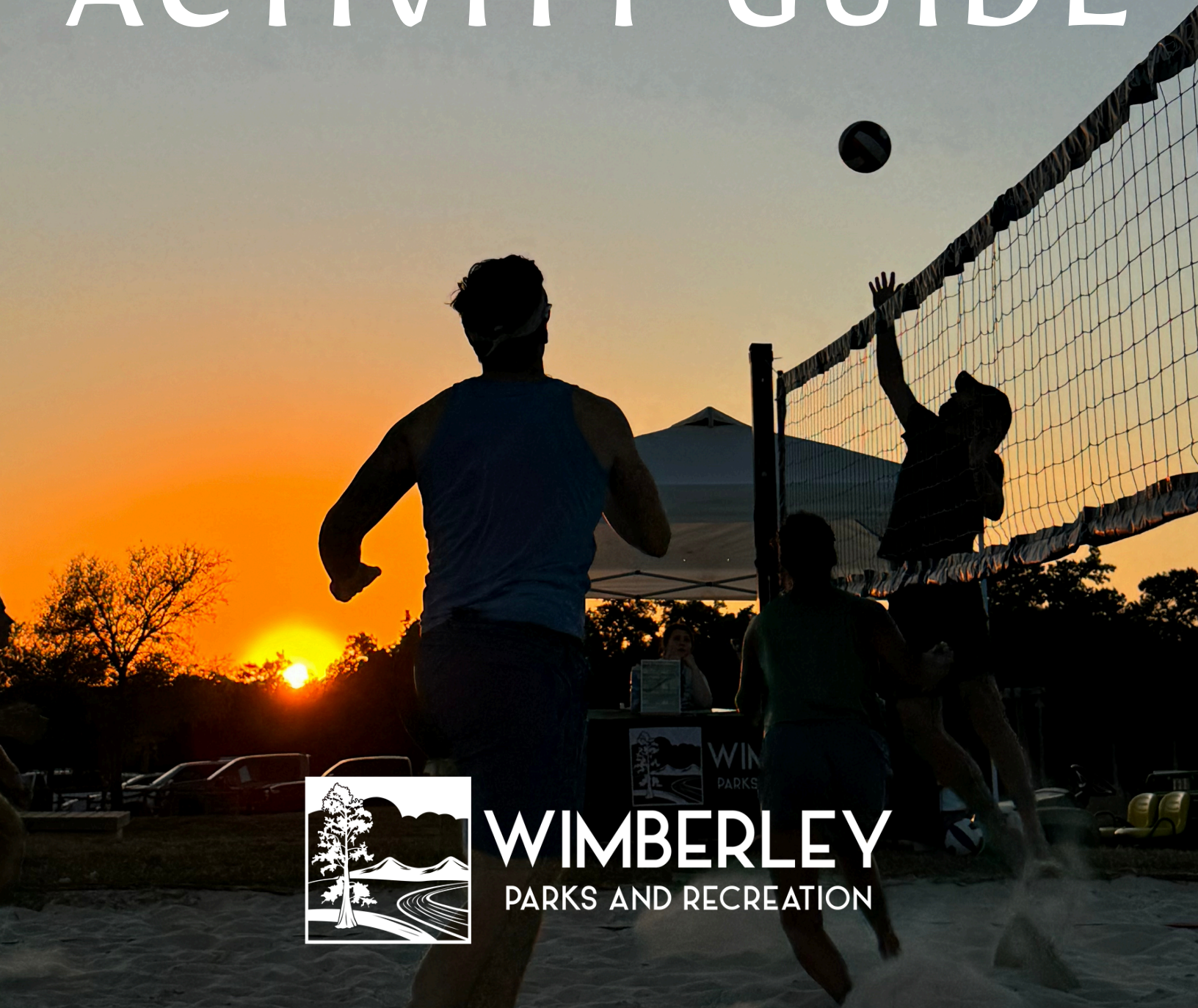


WIMBERLEY PARKS AND RECREATION

2025

ACTIVITY GUIDE



WIMBERLEY
PARKS AND RECREATION



WELCOME!

PHONE

For assistance or inquiries, feel free to reach out to us at **512-660-9111**. Alternatively, you can stay informed about the latest program updates by visiting our social media pages.

ONLINE

To seamlessly register for parks and recreation programs, explore our user-friendly online registration system at **www.wimberleyparksandrec.com**. This platform allows you to enroll in programs, reserve facilities, dive into detailed event information, and much more!

IN-PERSON

Stop by the Wimberley Community Center at **14068 Ranch Rd 12 Wimberley, TX 78676** and our helpful Customer Service Representative will be happy to assist you.



WIMBERLEYPARKSANDREC.COM

As this guide contains a substantial volume of information, it is possible that modifications may occur after publication. The latest and most up-to-date information can be found online at wimberleyparksandrec.com.
We appreciate your understanding in situations where changes take place.

CONTENTS

3 **YOUR PARKS AND REC TEAM**
Connect with us

5 **WIMBERLEY PARKS SYSTEM**
Choose your adventure

7 **SPECIAL EVENTS**
Holiday events, concerts, & more

15 **SPORTS**
Sand volleyball, archery, cornhole, & more

17 **CAMPS**
Summer Camps, Nature Camp, & more

19 **NATURE EDUCATION**
Guided hikes, owl prowls, & more

21 **HEALTH AND WELLNESS**
Fitness classes & community workouts

23 **ARTS AND REC**
Painting, tie-dye, & photography

25 **SWIMMING AT BLUE HOLE**
Visit the world-renowned swimming hole

27 **PARK FACILITY RENTALS**
Host your next party in the park

29 **COMMUNITY CENTER**
Reserve this versatile space for your next event



**DID YOU
KNOW?**

What you see is what you get!
We don't use stock images in this guide.
Every photo is from real Wimberley Parks and Recreation programs, events, and locations!

HOWDY!

YOUR PARKS AND REC TEAM

TITLE	NAME	PHONE	EMAIL
Director	Richard Shaver	512-660-9111 ext. 209	rshaver@cityofwimberley.com
Natural Resources & Maintenance Manager	Bryce Burkhalter	512-660-9111 ext. 212	bburkhalter@cityofwimberley.com
Community Center Manager	Samantha Engemoen	512-847-2510	sengemoen@cityofwimberley.com
Park Maintenance Technician	Allison Estep	512-660-9111	parks@cityofwimberley.com
Park Operations Manager	Erica Flocke	512-660-9111 ext. 214	eflocke@cityofwimberley.com
Recreation Manager	Rachel Littleton	512-660-9111 ext. 210	rlittleton@cityofwimberley.com
Customer Service Representative	Cameron Savage	512-660-9111 ext. 215	parks@cityofwimberley.com
Recreation Specialist	Isabella St. John	512-660-9111	istjohn@cityofwimberley.com
Park Maintenance Technician	Ryan Zizzo	512-660-9111	parks@cityofwimberley.com



WIMBERLEY
PARKS AND RECREATION



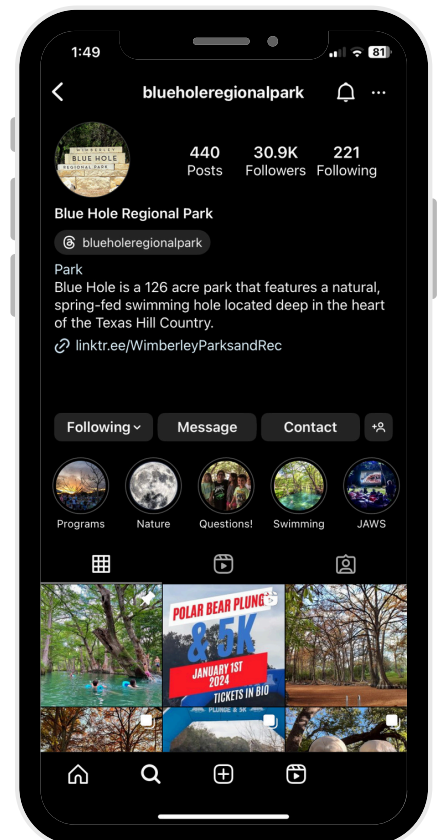
@wimberleyparksandrec
@blueholeregionalpark



@wimberleypard
@blueholeregionalpark



Join our monthly newsletter!
Visit our website
to sign up!

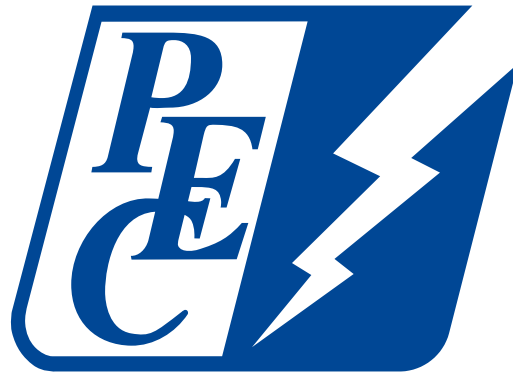


WE NEED YOUR HELP!

SPONSORSHIP OPPORTUNITIES

Elevate your brand with Wimberley Parks and Recreation sponsorship opportunities! Don't miss this opportunity to become an integral part of Wimberley's heart and soul. Join us in making a positive impact on our community while strategically positioning your brand for success. For a detailed discussion and to explore the sponsorship packages tailored to your needs, please contact rshaver@cityofwimberley.com. We look forward to partnering with you and creating memorable experiences for the Wimberley community together!

THANK YOU SPONSORS!



WIMBERLEY PARKS SYSTEM



BLUE HOLE REGIONAL PARK

333 Blue Hole Lane Wimberley, TX 78676
Regular hours: 8 a.m. to Sunset



WIMBERLEY COMMUNITY CENTER

14068 Ranch Road 12 Wimberley, TX 78676
Regular hours: 9 a.m. to 5 p.m.



CYPRESS CREEK NATURE PRESERVE

333 Blue Hole Lane Wimberley, TX 78676
Regular hours: 8 a.m. to Sunset



MARTHA KNIES COMMUNITY PARK

111 Old Kyle Road Wimberley, TX 78676
Regular hours: 8 a.m. to Sunset



OAK PARK

109 Oak Drive Wimberley, TX 78676
Regular hours: 8 a.m. to Sunset



OLD BALDY PARK

31 La Toya Trail Wimberley, TX 78676
Regular hours: 8 a.m. to Sunset



PATSY GLENN REFUGE

14068 Ranch Road 12 Wimberley, TX 78676
Regular hours: 8 a.m. to Sunset



SUNRISE PARK

10450 Ranch Road 12 Wimberley, TX 78676
Regular hours: 8 a.m. to Sunset

WIMBERLEY PARKS SYSTEM

BLUE HOLE REGIONAL PARK

This 126-acre park, acquired by the City in 2005, has a natural swimming area on Cypress Creek as its main recreation feature. The park features accessible open spaces, a basketball court, soccer fields, a sand volleyball court, over 4 miles of hiking trails, and primitive camping areas for scout groups. Additional amenities include restrooms, an amphitheater, a community pavilion, a playscape, picnic facilities, and BBQ grills.

WIMBERLEY COMMUNITY CENTER

Situated on 2.57 acres in downtown Wimberley, the Wimberley Community Center stands as a vibrant hub for community engagement. Established to serve as the focal point for various gatherings, this facility plays host to a myriad of community events, recreation programs, large private functions, and a dynamic rotating art gallery.

CYPRESS CREEK NATURE PRESERVE

A 7.24-acre tract of property along Cypress Creek located less than 100 yards from the Square in Downtown Wimberley. The park property was acquired in 2001 by the City, and features a walking trail along Cypress Creek connecting to Blue Hole Regional Park. At the time of acquisition, a conservation easement was entered into between the City of Wimberley and the Wimberley Valley Watershed Association.

MARTHA KNIES COMMUNITY PARK

A 1.2-acre park developed in 2001 which features a playscape, pavillion, public restrooms, and a water feature. This park was dedicated to Martha Knies, a prominent member of the community who served on the first City Council of Wimberley.

OAK PARK

Adjacent to the Wimberley Square, this complex is designed to be a landing space for visitors and locals. Oak Park is a community gathering space that features turf and includes bistro-style seating, restrooms, and several outdoor games.

OLD BALDY PARK

A 4.3-acre tract of property located off FM 2325, approximately 2.5 miles from the Square in Downtown Wimberley. The property was acquired by the City in 2015. 218 rock steps lead to the top of the hill and provide 360-degree views of the Wimberley Valley.

PATSY GLENN REFUGE

A 1.8-acre tract of property with a bird blind located adjacent to the Wimberley Community Center, one block from the Square in Wimberley. The property, named in honor of Patsy Glenn, a dedicated conservationist and bird enthusiast, is managed as a bird refuge and environmental education site by a local non-profit group, the Wimberley Birding Society, under an agreement with the City.

SUNRISE PARK

Nestled along Ranch Road 12, Sunrise Park graces the community with its inviting presence on a charming 0.90-acre parcel. This cozy park has become a beloved destination for locals and visitors alike, offering a delightful spot for a leisurely picnic.

DID YOU KNOW?

In 2024, we proudly completed the Wimberley Parks and Recreation Master Plan, a comprehensive guide to help shape the future of our parks over the next decade. Visit our website to explore the full plan and learn about the exciting path ahead!

SPECIAL EVENTS



POLAR BEAR PLUNGE AND 5K

Splash into the new year with our Polar Bear Plunge and 5K! The 5K race goes through Blue Hole Regional Park and the City of Wimberley. If you'd like to join the race, there's a registration fee, but the plunge is free for all participants! Free plunging on Jan 01 as well!

Ages: All

Location: Blue Hole Regional Park

DATE	DAY	TIME	FEE
Jan 04	Sat	9 a.m. to 1 p.m.	\$30-45 per person



WIMBERLEY VALENTINE'S GALA

Celebrate love at our Valentine's Day Gala! Join us for an enchanting night filled with live music, dinner, and a magical ambiance. Dance, connect, and create cherished memories!

Ages: 21+

Location: Wimberley Community Center

DATE	DAY	TIME	FEE
Feb 14	Fri	7 p.m. to 10 p.m.	\$40 per person



CREEKSIDE CAMPOUT

Escape to nature at our Creekside Campout! Immerse yourself in a night of starlit serenity beside Cypress Creek. Enjoy a campfire, stargazing, and other activities. Unplug and unwind at this exclusive camping opportunity at Blue Hole.

Ages: All

Location: Blue Hole Regional Park

DATES	DAY	TIME	FEE
Mar 08 - 09	Sat	Check in 3 p.m. Saturday	\$30 per tent
Nov 15 - 16	Sat	Check out 11 a.m. Sunday	

DID YOU KNOW?

Many of our events are held on an annual basis, providing a consistent opportunity for you to establish traditions! So don't worry if you missed Polar Bear Plunge or Creekside Campout this year - we host these events annually!

SPECIAL EVENTS



CAMP NO KIDS

Camp No Kids is an adults-only event, featuring nature hikes, kayaking, team challenges, and fun activities like crafting friendship bracelets. It's the perfect way to reconnect with your inner child while enjoying a nostalgic camp experience—without the kids!

Ages: 21+

Location: Blue Hole Regional Park

DATE	DAY	TIME	FEE
Mar 29	Sat	10 a.m. to 4 p.m.	\$50 per person



FRIENDS OF WIMBERLEY PARKS CONCERT SERIES

Friends of Wimberley Parks and the City of Wimberley Parks and Recreation Department present the 12th annual Concert in the Park series at Blue Hole Regional Park. Check out our website to see who's playing!

Ages: All

Location: Blue Hole Regional Park



DATES	DAY	TIME	FEE
Apr 04	Fri	6 p.m. to 8 p.m.	FREE!
Apr 11	Fri	6 p.m. to 8 p.m.	FREE!
Apr 18	Fri	6 p.m. to 8 p.m.	FREE!
Apr 25	Fri	6 p.m. to 8 p.m.	FREE!



WIMBERLEY FILM FESTIVAL

In partnership with Netta Lou Creative, this event features Texas-made short films, live music, and swimming! BYOB (no glass) and chairs and blankets for a cozy evening!

Rainout dates are available online.

Ages: All

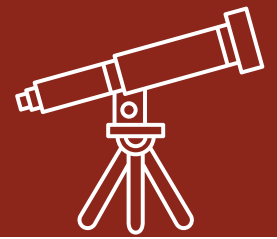
Location: Blue Hole Regional Park



DATE	DAY	TIME	FEE
Apr 12	Sat	6 p.m. to 10 p.m.	\$20 per person



SPECIAL EVENTS



STAR PARTY

Bask in the brilliance of the expansive night sky deep within the heart of Wimberley! This event is presented by the Wimberley Valley Dark Sky Committee and the Texas State Astronomy Club. Join us and experience stargazing and guided telescope viewings in our globally recognized dark sky community.

Ages: All

Location: Blue Hole Regional Park



@WimberleyDarkSky

DATES	DAY	TIME	FEE
Apr 26	Sat	7:30 p.m. to 9:30 p.m.	FREE!
Oct 25	Sat	7:30 p.m. to 9:30 p.m.	FREE!



COMMUNITY GARAGE SALE

Beat the heat and continue the hunt indoors after Market Days. This is your chance to find hidden treasures or declutter your space! Browse a variety of booths, snag great deals, and enjoy a fun day of shopping. See our website for booth pricing.

Ages: All

Location: Wimberley Community Center

DATE	DAY	TIME	FEE
May 03	Sat	8 a.m. to 3 p.m.	FREE to attend!
Sep 06	Sat	8 a.m. to 3 p.m.	FREE to attend!



MIGRATORY BIRD DAY SEMINAR

Let your knowledge take flight! Explore avian wonders and discover conservation insights. Join us for an enlightening day dedicated to our feathered friends, where expert speakers and interactive sessions will inspire bird lovers of all ages.

Ages: All

Location: Wimberley Community Center

DATE	DAY	TIME	FEE
May 10	Sat	9 a.m. to 2 p.m.	\$15 per person

SPECIAL EVENTS



CHAMBER OF COMMERCE INDEPENDENCE DAY PARADE

Help us celebrate our nation's independence with a festive display of patriotism and community spirit! Enjoy colorful floats, marching bands, vintage cars, and local organizations coming together to showcase creativity and pride.



Ages: All

Location: Downtown Wimberley

DATE	DAY	TIME	FEE
Jul 04	Fri	10 a.m. to 12 p.m.	FREE!



Marina Wanders Photography <https://marinawanders.com/>

MOVIE IN THE PARK

Delight in an outdoor experience where community and cinema come together! Bring your blankets and chairs to enjoy a family-friendly film under the stars. Free swimming starts at 7 p.m. and the movie starts at 8 p.m.

Ages: All

Location: Blue Hole Regional Park

DATE	DAY	TIME	FEE
Jul 19	Sat	8 p.m. to 10 p.m.	FREE!



BACK TO SCHOOL BASH

Join Wimberley Parks and Recreation for a Back to School Bash. Enjoy games, music, and FREE swimming. Let's celebrate the start of a new academic year and start on the right foot! All are welcome!

Ages: All

Location: Blue Hole Regional Park

DATES	DAY	TIME	FEE
Aug 09	Sat	6:30 to 8 p.m.	FREE!



DID YOU KNOW?

Our Back to School Bash offers free swimming, exciting games, and the chance to give back! During the event, we host a school supply drive benefiting the Barnabas Connection, helping local students start the year off right.

SPECIAL EVENTS



SHAKESPEARE IN THE PARK

The Central Texas Theatre Academy and the Wimberley Parks and Recreation Department are bringing this annual theatrical production to Blue Hole Regional Park for free!



Ages: All

Location: Blue Hole Regional Park

DATES	DAY	TIME	FEE
Aug 30 - 31	Sat & Sun	8 p.m. to 10 p.m.	FREE!
Sep 06 - 07	Sat & Sun	8 p.m. to 10 p.m.	FREE!



SUICIDE AWARENESS WALK AND HEALTH AND WELLNESS FAIR

Join the WISD Wellness Center in collaboration with The Greater Mercy Foundation, as we walk to raise awareness, offer support, and honor those affected by suicide. Together, we walk to break the stigma surrounding mental health and promote hope.



Ages: All

Location: Blue Hole Regional Park

DATES	DAY	TIME	FEE
Sep 13	Sat	9 a.m. to 11 a.m.	FREE!



HAUNTED TRAIL

Venture into the eerie unknown on our Haunted Trail series! Navigate spine-chilling paths, encounter ghostly surprises, and feel the thrill of the night. A hair-raising adventure awaits! Brave souls, dare to join us!

Ages: All, suggested 10+ (it's scary!)

Location: Blue Hole Regional Park

DATES	DAY	TIME	FEE
Oct 04	Sat	8 p.m. to 9 p.m.	\$2 per person
Oct 11	Sat	8 p.m. to 9 p.m.	\$2 per person
Oct 18	Sat	8 p.m. to 9 p.m.	\$2 per person

SPECIAL EVENTS



HOWL AT THE MOON DANCE PARTY

Join us at Blue Hole Regional Park for our annual Howl at the Moon Dance Party! Feel the thrill of dancing under the moonlight and then, at 8:30 p.m., let loose with an exhilarating group howl at the moon!

Ages: All

Location: Blue Hole Regional Park

DATES	DAY	TIME	FEE
Oct 07	Sat	8 p.m. to 9 p.m.	FREE!



BOO! HOLE HALLOWEEN

Mark your calendars and bring along your entire group of ghosts, superheroes, zombies, and vampires! All ghouls and goblins will enjoy a trick-or-treat trail, costume contests, Halloween-themed carnival games, and more. This is our largest event of the year!

Ages: All

Location: Blue Hole Regional Park

DATES	DAY	TIME	FEE
Oct 18	Sat	4 p.m. to 10 p.m.	FREE!



HALLOWEEN BALL

Get ready for a night of spooky elegance, where mystery and magic come to life! Dress in your most creative costumes and dance the night away in a hauntingly beautiful setting with live music.

NEW!

Ages: All

Location: Wimberley Community Center

DATES	DAY	TIME	FEE
Oct 31	Fri	7 p.m. to 10 p.m.	\$40 per person



DID YOU KNOW?

BOO! Hole Halloween is our biggest event of the year! In 2024, we welcomed over 5,000 visitors to Blue Hole Regional Park. Local businesses are invited to join as vendors for this exciting event—visit our website for more details.



RIDE TO END ALZ

This is a cycling event for a range of riders. Select a distance that fits your skill level and pushes you to earn a medal! With each mile, participants fuel research targeted to change the trajectory of Alzheimer's disease.



Ages: See website for details

Location: Blue Hole Regional Park

DATES	DAY	TIME	FEE
Nov 08	Sat	8 a.m.	See website act.alz.org



COMMUNITY THANKSGIVING

Join us for the 32nd annual Wimberley Community Thanksgiving Dinner. During the event, our diverse community unites for a Thanksgiving feast, sharing joy, gratitude, and delicious food. All are welcome! Thank you Dave Lewis and volunteers!

Ages: All

Location: Wimberley Community Center

DATES	DAY	TIME	FEE
Nov 27	Thur	11 a.m. to 2 p.m.	FREE!



PRINCESS BALL

We are thrilled to host the annual princess ball presented by Central Texas Theatre Academy! Join Elsa, Anna, Belle, Rapunzel, and Aurora for a magical tea party, fun Christmas crafts, dancing and singing, and a visit from St. Nick himself!



Ages: All

Location: Wimberley Community Center

DATES	DAY	TIME	FEE
Dec TBD	Fri	6:30 p.m. to 9 p.m.	\$15-35 per person

DID YOU KNOW?

Our busiest seasons for programs and events are in the spring and fall—the perfect times to welcome out-of-town guests and experience some of our most exciting and popular offerings!

HOMETOWN HOLIDAYS



Enjoy Wimberley's holiday spirit with lights, music, and fun for all! Events are sponsored by the Wimberley Merchants Association, Wimberley Valley Chamber of Commerce, City of Wimberley, and Visit Wimberley. For dates and times, visit wimberley.org or visitwimberleytx.org.

WISHES 4 WIMBERLEY PARADE AND TREE LIGHTING

- Tree lighting ceremony at EmilyAnn Theatre & Gardens.
- Santa Claus leads the parade from Lion's Field through downtown Wimberley with festive floats.
- A second tree lighting downtown where Santa will greet attendees.
- Please bring a new, unwrapped toy to help local families in need. These toys will benefit the Toy Drive for the Barnabas Connection's Christmas Store.



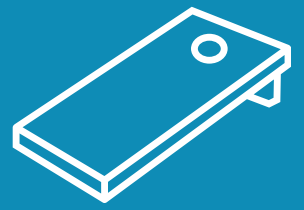
WIMBERLEY CUP OF CHEER

- Stroll through downtown Wimberley, enjoying holiday drinks—both alcoholic and non-alcoholic—offered by local businesses. Shops will stay open late, so you can sip, shop, and enjoy the holiday vibes.

HOLIDAY AUCTION & RAFFLE

- Bid on unique items featured at shops around town. It's a perfect way to explore Wimberley and find great holiday gifts!





ADULT CORNHOLE

Immerse yourself in the fun of our outdoor adult cornhole league! Toss bean bags under the open sky, as you aim for victory. Join fellow enthusiasts for laid-back, yet competitive matches, where every throw brings moments of skill, laughter, and social connection. 2 people per team. Must register as a team. 4-week league.

Ages: 18+

DATES	DAY	TIME	LOCATION	FEE PER TEAM
Mar 06 - 27	Thursdays	6 p.m. to 7:30 p.m.	Oak Park	\$35
Sep 04 - 25	Thursdays	6 p.m. to 7:30 p.m.	Oak Park	\$35

ADULT SAND VOLLEYBALL

Experience the thrill of our outdoor adult sand volleyball league! Engage in competitive matches on the sun-soaked courts, where camaraderie and skill converge. Serve, spike, and set your way through spirited games, creating unforgettable moments of athletic prowess and friendship. 6 people per team. 6-week league.

Ages: 18+

DATES	DAY	TIME	LOCATION	FEE PER PERSON	FEE PER TEAM
Mar 25 - Apr 29	Tuesdays	5 p.m. to 8 p.m.	Blue Hole Regional Park	\$20	\$105
Sep 02 - Oct 07	Tuesdays	5 p.m. to 8 p.m.	Blue Hole Regional Park	\$20	\$105

ADULT BOCCE BALL

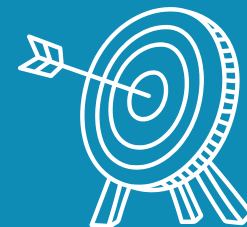
Join our bocce ball league for some fun and friendly competition! Perfect for players of all skill levels, this league offers a relaxed, social atmosphere where you can enjoy the outdoors, meet new people, and sharpen your bocce skills. Grab your friends and let the good times roll! 2 people per team. Must register as a team. 4-week league.

Ages: 18+

DATES	DAY	TIME	LOCATION	FEE PER TEAM
May 01 - 22	Thursdays	6:30 p.m. to 7:30 p.m.	Blue Hole Regional Park	\$35

NEW!





ARCHERY

Experience the thrill of archery in our exciting classes designed for all skill levels! Whether you're a beginner or looking to refine your technique, our expert instructors will guide you through the fundamentals and help you develop your aim. Join us for a fun and challenging outdoor activity that enhances focus, coordination, and confidence!

Ages: 10+

	DATES	DAY	TIME	LOCATION	FEE PER PERSON
NEW!	May 05	Monday	6 p.m. to 7:30 p.m.	Blue Hole Pavilion	\$15 per person
	May 07	Wednesday	6 p.m. to 7:30 p.m.	Blue Hole Pavilion	\$15 per person
	Aug 04	Monday	6 p.m. to 7:30 p.m.	Blue Hole Pavilion	\$15 per person
	Aug 06	Wednesday	6 p.m. to 7:30 p.m.	Blue Hole Pavilion	\$15 per person

ADULT KICKBALL

This league is perfect for players of all skill levels, and is a great way to enjoy the outdoors, stay active, and make new friends. Gather your team, lace up your sneakers, and join us for a season filled with laughter and exciting gameplay! 6 people per team. 4-week league.

Ages: 18+

DATES	DAY	TIME	LOCATION	FEE PER PERSON	FEE PER TEAM
Nov 03 - 24	Mondays	5 p.m. to 6 p.m.	Blue Hole Soccer Fields	\$20	\$105



DID YOU KNOW?

Inaugurated in 2023, the City of Wimberley sports leagues launched with a resounding success, starting with adult sand volleyball. Thanks to its overwhelming popularity, we've expanded our program to offer even more sports and activities for the community to enjoy!

CAMPS



SPRING BREAK CAMP

Need Spring Break plans? You've come to the right place! This camp offers a variety of exciting activities, including arts and crafts, outdoor games, nature exploration, and team challenges. Each day is packed with new experiences, friendships, and the opportunity to learn and grow in a supportive environment. Register quick, spots fill up FAST!

Registration opens February 1st.

Ages: 6-12

DATES	DAY	TIME	LOCATION	TOTAL WEEKLY PRICE
Mar 17 - 21	Monday-Friday	8:00 a.m. to 3:30 p.m.	Blue Hole Regional Park	\$200 per person



WIMBERLEY SUMMER CAMP

Join us for our indoor summer camp at the Wimberley Community Center! We will have fun-themed weeks with games, education, and more! Beat the heat by playing games in Johnson Hall and doing crafts in the Blanco room. This camp is designed for comfort and fun! **Registration opens February 1st.**

Ages: 6-12 and 13-15

DATES	DAY	TIME	LOCATION
Jun 02 - Jul 25	Monday - Friday	8 a.m. to 3 p.m.	Wimberley Community Center

RATE TYPE	SESSION PRICE	DEPOSIT	TOTAL WEEKLY PRICE
Resident	\$150	\$50	\$200 per person
Non-Resident	\$200	\$50	\$250 per person



CAMPS



BLUE HOLE NATURE CAMP

Blue Hole Nature Camp is a weekly day camp program that the City of Wimberley Parks and Recreation Department provides to the nature-conscious youth of the community, ages 6 to 12, and a Counselor-in-Training program for ages 13 to 15. This award-winning camp has different nature themes every week, keeping your kids engaged and most importantly, having fun! **Registration opens February 1st.**

Ages: 6-12 and 13-15

DATES	DAY	TIME	LOCATION
May 26 - Aug 01	Monday - Friday	8 a.m. to 3 p.m.	Blue Hole Regional Park

RATE TYPE	SESSION PRICE	DEPOSIT	TOTAL WEEKLY PRICE
Resident	\$200	\$50	\$250 per person
Non-Resident	\$250	\$50	\$300 per person
Counselor-in-Training	\$50	\$50	\$100 per person

DID YOU KNOW?

Each week of our camps features unique themes, from space exploration to underwater adventures. Be sure to check out our website for the full lineup of themed weeks—dressing up is highly encouraged for added fun!



NATURE EDUCATION



GUIDED HIKES

Join us once a month for a FREE guided hike led by Wimberley Parks and Rec staff! Each month we will have a different theme, from riparian systems, to learning about trees, to covering the history of our parks. All guided hikes are ADA-accessible and rated easy. Check our website to stay up to date regarding themes and meeting locations!
Ages: All

DATES	DAY	TIME	LOCATION	FEE
Jan 17	Friday	9 a.m. to 10 a.m.	Blue Hole Regional Park	FREE!
Apr 18	Friday	9 a.m. to 10 a.m.	Blue Hole Regional Park	FREE!
Jul 18	Friday	9 a.m. to 10 a.m.	Blue Hole Regional Park	FREE!
Nov 21	Friday	9 a.m. to 10 a.m.	Blue Hole Regional Park	FREE!



OWL PROWL

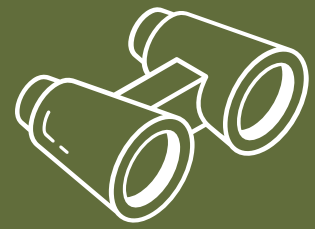
Whooooo's ready to learn about owls on a night hike? Join us in this incredible opportunity as we trek across Blue Hole Regional Park in search of owls. Come practice your owl calls, dissect an owl pellet, and explore the park at night. Register soon, spots fill up quick for this highly anticipated program! Children under 10 come FREE.
Ages: All

DATES	DAY	TIME	LOCATION	FEE PER PERSON
Mar 20	Thursday	7:30 p.m. to 8:30 p.m.	Blue Hole Regional Park	\$10
Mar 21	Friday	7:30 p.m. to 8:30 p.m.	Blue Hole Regional Park	\$10
Nov 13	Thursday	7:30 p.m. to 8:30 p.m.	Blue Hole Regional Park	\$10
Nov 14	Friday	7:30 p.m. to 8:30 p.m.	Blue Hole Regional Park	\$10

DID YOU KNOW?

Owl Prowl and Firefly Watch are two of our most popular nature education programs, and spots sell out fast! Be sure to reserve your tickets as soon as possible to secure your spot for these incredible experiences.

NATURE EDUCATION



BIRDS AND BREW

Are you an aspiring birder who wants to learn more about birds? Join us as we go on a bird outing through Blue Hole Regional Park, searching for our feathered friends with aviary biologists from SWCA Environmental Consultants; we'll bring the coffee!

Ages: All

DATES	DAY	TIME	LOCATION	FEE
May 03	Saturday	8 a.m. to 9 a.m.	Blue Hole Regional Park	FREE!
Sep 20	Saturday	8 a.m. to 9 a.m.	Blue Hole Regional Park	FREE!

FIREFLY WATCH

The fireflies at night are big and bright, deep in the heart of Texas! Join us in a community science firefly watch to learn about the fascinating lives of fireflies, and how we can play a part in ensuring they are around for the enjoyment of future generations! Children under 10 come FREE.

Ages: All

DATES	DAY	TIME	LOCATION	FEE PER PERSON
May 16	Thursday	8:30 p.m. to 9:30 p.m.	Blue Hole Regional Park	\$5
Aug 15	Friday	8:30 p.m. to 9:30 p.m.	Blue Hole Regional Park	\$5

SUSTAINABILITY WORKSHOP

Join Wimberley Parks and Rec for our sustainability series! Each week we will focus on a different aspect of sustainable living. You can come to one, or you can come to all of them! We will talk about sustainable swaps, how to make your home more sustainable, and even how to make sustainable crafts.

Visit our website wimberleyparksandrec.com for more information about each workshop topic.

Ages: All

DATES	DAY	TIME	LOCATION	FEE PER PERSON
Jun 04	Wednesday	6:30 p.m. - 7:30 p.m.	Community Center	\$5
Jun 11	Wednesday	6:30 p.m. - 7:30 p.m.	Community Center	\$5
Jun 18	Wednesday	6:30 p.m. - 7:30 p.m.	Community Center	\$5
Jun 25	Wednesday	6:30 p.m. - 7:30 p.m.	Community Center	\$5



HEALTH AND WELLNESS



COMMUNITY WORKOUTS

Join us for a FREE community workout hosted by Red Oak Strength and Joy Lab Fit Co. Sweat, smile, and thrive together through this community program. This outdoor workout occurs at Oak Park every second Saturday of the month, and is open to people of all fitness levels.

Ages: All



DATES	DAY	TIME	LOCATION	FEE
Ongoing	Second Saturday of each month	9 a.m. to 10 a.m.	Oak Park	FREE!

ZUMBA

Shake off stress and dance your way to fitness with our Zumba program! Energizing beats, fun choreography, and a supportive community await. Join instructor Tanya Kilgore in the rhythm, break a sweat, and let the joy of Zumba transform your workout experience at the Wimberley Community Center!

Ages: All



DATES	DAY	TIME	LOCATION	FEE PER PERSON
Ongoing	Mondays, Wednesdays, Fridays	9 a.m to 10 a.m.	Community Center	\$5 per class

YOGA

Elevate your well-being with Carla Daws! Join our yoga program led by Carla's expert guidance. Embrace serenity, strengthen your body, and find balance. We offer two different times for this program at the Wimberley Community Center, so this is perfect for anyone with a busy schedule.

Ages: All

DATES	DAY	TIME	LOCATION	FEE PER PERSON
Ongoing	Tuesdays	6 p.m. to 7 p.m.	Community Center	\$10 per class
Ongoing	Thursdays	12 p.m. to 1 p.m.	Community Center	\$10 per class



HEALTH AND WELLNESS



BELLY DANCING

Get moving! Increase your balance and body awareness. Improve your confidence. Learn something new and have tons of fun doing it! Instructor Brandi has a BA in Dance and a MA in Women's Studies from Texas Woman's University. She is a choreographer and has been belly dancing since she was 16.

Ages: All

DATES	DAY	TIME	LOCATION	FEE PER PERSON
Ongoing	Tuesdays	12 p.m. to 1 p.m.	Community Center	\$15 per class
Ongoing	Thursdays	6 p.m. to 7 p.m.	Community Center	\$15 per class



BOARD GAME NIGHTS

Gather your friends or come solo for a lively board game night, free for everyone! Choose from a wide selection of classic and modern games suited for all ages and skill levels. Whether you're a board game pro or just looking to try something new, it's the perfect chance to unwind, make new friends, and enjoy some friendly competition.

Ages: All

DATES	DAY	TIME	LOCATION	FEE PER PERSON
Ongoing	Third Saturday of each month	6 p.m. to 7 p.m.	Community Center	FREE!

DID YOU KNOW?

We're eager to collaborate with instructors to expand our health and wellness class offerings! Do you have a class you'd like to teach? Get featured in our guide and learn more about profit-sharing opportunities by emailing us at parks@cityofwimberley.com.



SNAP AND STROLL

Capture the park's beauty on film with a disposable camera provided by us! Join this guided walk to explore nature through the lens of film photography—no experience needed. Snap unique shots and discover the art of analog photography in a beautiful outdoor setting. Send your film off for development and eagerly wait to see your art!

Ages: All

DATES	DAY	TIME	LOCATION	FEE PER PERSON
Feb 21	Friday	9 a.m. to 10 a.m.	Martha Knies Community Park	\$20
Aug 29	Friday	9 a.m. to 10 a.m.	Martha Knies Community Park	\$20



PAINTING WITH PARKS

Do you enjoy spending time in nature AND painting? Then we've created the perfect program for you! Join Wimberley Parks and Rec in painting serene scenes in our parks around Wimberley. Get exclusive access to park locations to capture unique settings for your artistic inspiration.

Ages: All, recommended 10+

DATES	DAY	TIME	LOCATION	FEE PER PERSON
Mar 05	Wednesday	9 a.m. to 12 p.m.	Blue Hole Regional Park	\$15
Apr 02	Wednesday	9 a.m. to 12 p.m.	Blue Hole Regional Park	\$15
Oct 01	Wednesday	9 a.m. to 12 p.m.	Blue Hole Regional Park	\$15
Nov 05	Wednesday	9 a.m. to 12 p.m.	Blue Hole Regional Park	\$15

TIE-DYE DAY

Get groovy at our Tie-Dye Day! Kick off the celebration of Parks and Rec Month with this expressive program at the Community Center. Unleash your creativity, bring a splash of color to your world, and tie-dye the day away. We'll provide t-shirts, tie-dye and cool patterns!

Ages: All

DATES	DAY	TIME	LOCATION	FEE PER PERSON
Jul 05	Saturday	5:00 p.m. to 6:00 p.m.	Community Center	\$15

2025 PROGRAMS AND EVENTS

JAN	04	Polar Bear Plunge & 5K
	11	Community Workout
	17	Guided Hike
	18	Board Game Night

FEB	08	Community Workout
	14	Valentine's Gala
	15	Board Game Night
	21	Snap and Stroll

MAR	05	Painting with Parks
	06, 13, 20, 27	Cornhole
	08	Community Workout
	08 - 09	Creekside Campout
	15	Board Game Night
	17 - 21	Spring Break Camp
	20	Owl Prowl
	21	Owl Prowl
	25	Sand Volleyball
	29	Camp No Kids

APR	01, 08, 15, 22, 29	Sand Volleyball
	02	Painting with Parks
	04	Concert in the Park
	11	Concert in the Park
	12	Wimberley Film Festival
	12	Community Workout
	18	Concert in the Park
	18	Guided Hike
	19	Board Game Night
	25	Concert in the Park
26	Star Party	

MAY	01, 08, 15, 22	Bocce Ball
	01	Swim Season Starts
	03	Birds & Brew
	03	Community Garage Sale
	05	Archery
	07	Archery
	10	Migratory Bird Day Seminar
	10	Community Workout
	16	Firefly Watch
	17	Board Game Night
	26	Nature Camp Begins

JUN	02	Summer Camp Begins
	04	Sustainability Workshop
	11	Sustainability Workshop
	14	Community Workout
	18	Sustainability Workshop
	21	Board Game Night
	25	Sustainability Workshop

JUL	04	Independence Day Parade
	05	Tie-Dye Day
	12	Community Workout
	18	Guided Hike
	19	Movie in the Park
	19	Board Game Night
25	Summer Camp Ends	

AUG	01	Nature Camp Ends
	04	Archery
	06	Archery
	09	Back to School Bash
	09	Community Workout
	15	Firefly Watch
	16	Board Game Night
	29	Snap and Stroll
	30	Shakespeare in the Park
	31	Shakespeare in the Park

SEP	02, 09, 16, 23, 30	Sand Volleyball
	04, 11, 18, 25	Cornhole
	06	Shakespeare in the Park
	06	Community Garage Sale
	07	Shakespeare in the Park
	13	Community Workout
	13	Suicide Awareness Walk
	20	Birds & Brew
	20	Board Game Night

OCT	01	Painting with Parks
	04	Haunted Trail
	07	Sand Volleyball
	07	Howl at the Moon
	11	Community Workout
	11	Haunted Trail
	18	Boo! Hole Halloween
	18	Haunted Trail
	18	Board Game Night
	25	Star Party
31	Halloween Ball	

NOV	03, 10, 17, 24	Kickball
	05	Painting with Parks
	08	Community Workout
	08	Ride to End ALZ
	13	Owl Prowl
	14	Owl Prowl
	15	Board Game Night
	15 - 16	Creekside Campout
	21	Guided Hike
	27	Community Thanksgiving

DEC	13	Community Workout
	20	Board Game Night
	TBD	Princess Ball

wimberleyparksandrec.com

SWIMMING AT BLUE HOLE

Swim Season: May 1st through Labor Day and weekends in September



HALF-DAY ADMISSION

Nestled amidst iconic Cypress Trees, this natural, spring-fed swimming hole offers a refreshing oasis for the entire family. Jump into the crystal clear waters, bask in the warm sun on the grassy swim lawn, and feel the thrill of swinging on our famous rope swings. Children under four swim free!

Time slots: 9 a.m. to 1 p.m. & 2 p.m. to 6 p.m.

You may purchase both time slots if you wish to stay all day.

TYPE	AGE	PRICE PER PERSON	LOCATION
Adult	13 - 59	\$12 per time slot	Blue Hole Regional Park
Youth	4 - 12	\$8 per time slot	Blue Hole Regional Park
Senior	60 +	\$8 per time slot	Blue Hole Regional Park
Military	17 +	\$8 per time slot	Blue Hole Regional Park
Wimberley Resident	All Ages	\$6 per time slot	Blue Hole Regional Park

DID YOU KNOW?

Half-day admission passes go on sale March 1st.
Season passes go on sale March 1st for Wimberley Residents.
Season passes go on sale April 1st for Non-Residents.

SEASON PASSES

Seize the opportunity to explore Blue Hole all swim season long! Dive into the pristine waters, soak up the sun on the lush swim lawn, and experience the exhilaration of swinging on our renowned rope swings. Season pass holders do not need to make reservations, as a season pass permits access anytime the swimming area is open.

Swimming hours: 9 a.m. to 6 p.m.

TYPE	AGE	PRICE PER PASS	LOCATION
Adult	13 - 59	\$150	Blue Hole Regional Park
Youth	4 - 12	\$125	Blue Hole Regional Park
Senior	60 +	\$125	Blue Hole Regional Park
Military	17 +	\$125	Blue Hole Regional Park
Wimberley Residents	All Ages	\$100	Blue Hole Regional Park

DID YOU KNOW?

It pays to be a Wimberley Resident! Wimberley Residents get discounts on day passes, season passes, and have exclusive access to our Wimberley Nights program.

SWIMMING AT BLUE HOLE



Swim Season: May 1st through Labor Day and weekends in September

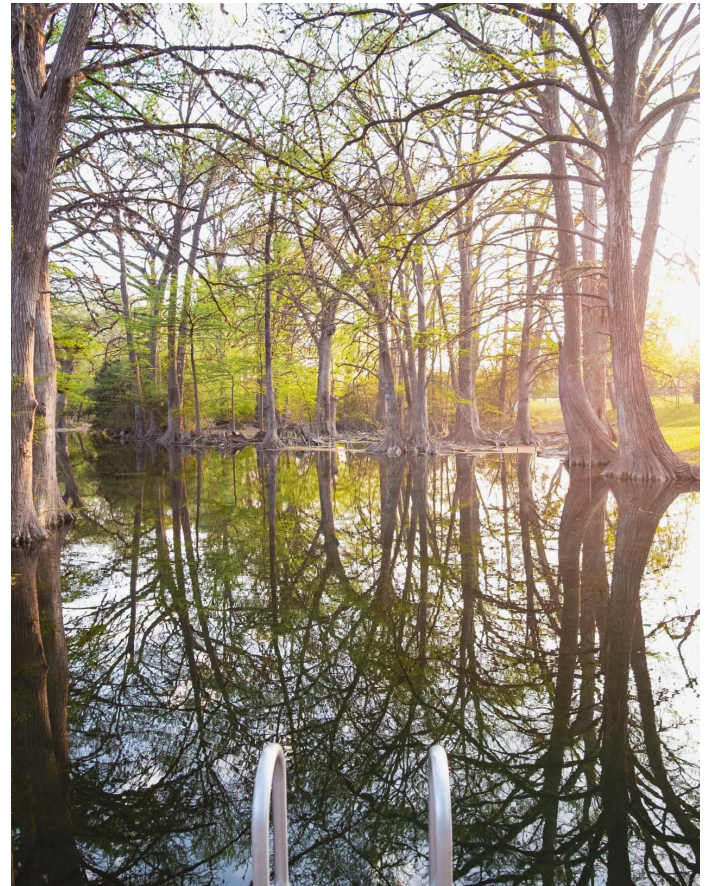
WIMBERLEY NIGHTS

The Blue Hole Swimming Area is open on Mondays, Wednesdays, and Fridays from 6:30 to 8:30 p.m. during our swim season for Wimberley residents only! Reservations cannot be made online. This program is first-come first-served, and guests will be turned away if we reach capacity (280 people). **Card only - no cash is accepted.**

All guests must present an ID or a piece of mail with a **78676** zip code. Wimberley ISD school IDs are not accepted. One Wimberley resident may bring up to 10 non-resident guests with them. Wimberley residents that have a season pass can also take advantage of this program for free.

In order to prioritize the safety and overall experience of all individuals taking part in the Wimberley Nights program, we have established a Zero Tolerance Policy. This policy grants us the authority to promptly, and without prior notice, expel individuals who violate any park regulations. Additionally, it is mandatory for guests under 18 years of age to be accompanied by an adult (18 and above) at all times when in the swim area during the Wimberley Nights program. One adult may bring up to 10 children with them.

DATES	DAY	TIME	PRICE PER PERSON	LOCATION
May 01 through Labor Day	Mondays Wednesdays Fridays	6:30 p.m. to 8:30 p.m.	\$2 (card only)	Blue Hole Regional Park



Low water levels, high bacteria levels, and poor visibility conditions are unsafe for swimming. These threats are beyond our control and the swimming area may be closed if these threats are present. We will monitor those conditions daily and update information on our website and social media pages.

PARK FACILITY RENTALS

FACILITY	WIMBERLEY RESIDENT	NON-RESIDENT
Blue Hole Swim Lawn	Weekday: \$100/hour Weekend: \$150/hour	Weekday: \$150/hour Weekend: \$200/hour
Primitive Camping Area (Girl and Boy Scouts ONLY)	\$50 per night	\$70 per night
Blue Hole Pavilion	\$30/hour	\$60/hour
Martha Knies Pavilion	\$30/hour	\$60/hour
Oak Park Lawn	\$30/hour	\$60/hour
Amphitheatre	\$20/hour	\$40/hour
Recreation Loop Picnic Area	\$20/hour	\$40/hour
Overlook	\$10/hour	\$20/hour
Fire Pit	\$5/hour	\$10/hour
Volleyball Court	\$5/hour	\$10/hour
Basketball Court	\$5/hour	\$10/hour



DID YOU KNOW?

You can view more details and reserve a park facility online at wimberleyparksandrec.com
Host your next birthday party, graduation party, or other special event at the park!

PARK FACILITY RENTALS



**DID YOU
KNOW?**

You can get married in a park! Picture saying "I do" under a canopy of trees, with birds singing their blessings and a gentle breeze embracing your guests.
For more information about weddings, please contact us at eflocke@cityofwimberley.com

COMMUNITY CENTER FACILITY RENTALS



**DID YOU
KNOW?**

Explore additional photos, view pricing details, and conveniently make a reservation by visiting us online at wimberleyparksandrec.com.

COMMUNITY CENTER FACILITY RENTALS

JOHNSON HALL

Searching for a venue that blends elegance, versatility, and history? Johnson Hall offers 3,960 square feet of event space, complete with polished concrete floors and iconic Buck Winn murals, creating a captivating atmosphere. Natural light pours through large windows, enhancing the room's ambiance. Along with your rental, enjoy a covered, lighted patio for outdoor mingling, tables and chairs arranged to your specifications, and optional enhancements like tablecloths, coffee service, and custom lighting. Johnson Hall is ideal for various gatherings, from weddings and receptions to conferences and banquets. Equipped with a state-of-the-art projector, sound system, wireless microphones, and podium, it accommodates up to 350 guests theater-style or 250 banquet-style. Join countless satisfied guests who have chosen Johnson Hall for memorable events.

BLANCO ROOM

The newly renovated Blanco Room is the perfect venue for intimate gatherings, offering 864 square feet of adaptable space for up to 50 guests. Ideal for luncheons, family gatherings, small presentations, meetings, and even game nights, this charming room is designed to meet your needs. It features two sink and counter areas for food and displays, a whiteboard for easy interaction, and comes with tables and chairs arranged to your preference. For added ambiance, optional items like tablecloths, uplighting, and a projector with a pull-down screen are available. Whether hosting a meeting, celebration, or workshop, the Blanco Room provides a welcoming, versatile setting tailored to your event.

CYPRESS ROOM

Our charming Cypress Room, with 432 square feet of well-designed space, is the perfect venue for intimate gatherings like homeowners' meetings, board discussions, presentations, study groups, or as an add-on to larger rooms. Equipped with a convenient sink and counter for snacks or materials, the room ensures guests feel comfortable and catered to. A whiteboard is included to facilitate discussions and note-taking, while tables and chairs are arranged to suit your needs, whether you prefer a classroom-style setup or a casual arrangement. Optional enhancements like uplighting, tablecloths, and coffee service are available for a small fee to create a warm and inviting atmosphere.

SENIOR LOUNGE

The inviting Senior Lounge is the perfect venue for your next special event, available for rent after 5:00 PM on weekdays and all day on weekends. Designed for comfort, it features 10 round tables seating four each, creating an intimate setting for guests to connect. The attached kitchenette, equipped with a sink and refrigerator, makes food prep and serving easy, ensuring your event flows smoothly. You'll also have access to the adjacent Library area with two smaller tables for quieter chats or games. Tables and chairs are included, and additional tables can be arranged for gifts, buffets, or dessert displays. With its own restrooms and convenient entry and exit doors, the Senior Lounge is ideal for gatherings like showers, birthday parties, family reunions, and more. This cozy, home-like space provides a memorable backdrop for your event.

ADD-ONS

Make event planning simpler and more successful with our convenient add-ons designed to meet all your needs. Our Commercial Kitchen, available for a one-time fee, provides everything for seamless food prep, whether you're cooking from scratch, setting up a catered meal, or hosting a potluck. This fully equipped kitchen includes a large refrigerator and freezer, a spacious sink, a gas oven and stove, and a warming unit to keep dishes at the perfect temperature, so you can focus on serving delicious food. We also offer unlimited ice from our ice machine for a small fee, ensuring your drinks stay cold without extra hassle. For a welcoming touch, consider our coffee service, complete with ceramic cups, creamer, and sweeteners, serving up to 50 guests. These add-ons allow you to tailor your event for maximum convenience and enjoyment.

NEED MORE INFO?

Contact our Community Center Manager, Samantha Engemoen, at 512-847-2510.



WIMBERLEY
PARKS AND RECREATION